

COMMON GROUND

2019 ANNUAL REPORT



COMMONGROUNDFAARM.ORG | 845-231-4424 | PO BOX 148 BEACON NY 12508

2019 ANNUAL REPORT

OUR MISSION

Common Ground Farm's mission is to serve our community as a model for food justice and education for people of all ages and incomes. Our vision is a food system where agricultural producers can earn a fair profit while caring for the land and their workers, where fresh produce is affordable and accessible to everyone, and where children and adults are nourished by a connection to the land and to their community.

We aspire to be innovators who can create the needed changes in our food system for the benefit of farmers and communities regionally and nationally. We believe that change happens out of deep community engagement, and we work broadly and holistically to address the needs of our Hudson Valley community through interconnected programs and initiatives. We do this through collaborative partnerships with other nonprofits, businesses, public institutions, schools and individuals.

Common Ground is a 501(c)3 nonprofit located on 6 acres of historic farmland leased from the Stony Kill Foundation in Wappingers Falls, NY. By keeping farmland active in this rapidly developing region, residents continue to be connected to their food and to the health of the land that nourishes them.

Common Ground is a member of the NOFA-NY Farmers Pledge program, which reflects our commitment to growing food sustainably without chemicals, treating our workers with dignity and showing respect and care for our land. We do not use chemical fertilizers, pesticides or herbicides, and we protect our ecosystem by maintaining biodiversity in our plantings. We limit unnecessary soil disturbances and tillage in order to build a healthy soil environment for microbes. Each year we build soil health by planting a cover crop in all of our fields for at least part of our season, and about half of our acreage remains in cover crop for the full growing season to build organic matter. The results of these practices are apparent in the increasing productivity of our fields and the high quality of the vegetables we bring to our markets and food access partners.

OUR WORK

Common Ground's three main branches work together to address food access and education on the farm, in schools and in cities. Our method reflects our belief in the multifaceted approach needed to address food insecurity in the 21st century.

FARM

The farm is the heart of Common Ground. We grow a diverse array of vegetables on our nine acres, offer year-round programs for children and adults, welcome visitors and volunteers alike to work and enjoy the land.

EDUCATION

Educational programming on the farm connects children and adults to food, creating opportunities for people to harvest vegetables with their own hands, learn cooking skills, and interact with our local food system. Education on the farm changes our relationship with the food we eat, with our own bodies, and with the land on which we live.

MARKETS

Our markets provide Common Ground with urban hubs within the cities of Beacon and Newburgh, NY. Common Ground operates popular and bustling weekend markets with food access programs, as well as two mobile markets that bring affordable produce to low-income communities.

COMMON GROUND

Dear Friend,

2019 has been an impactful year for our work in food access and education within our community--our programs have become truly integral to the people that we serve. We are developing a multifaceted and far-reaching approach to food security--changing the structure of our local food system. This year we worked to make nutritious food accessible and affordable to all, by strengthening our food donation program, by growing our farmers' markets in Beacon and Newburgh, by ensuring multiple food access strategies at all of our markets, by creating avenues for food access through the public schools, and by increasing our growing capacity--farming more intensively and lengthening our growing season.

This year we grew our food-based education and Farm to School programs in a variety of ways. We expanded Farm to School programming to reach every child in grades Pre-K through 8th grade in Beacon. In the cafeterias we are working with Beacon Food Services to increase local foods prepared and served in the schools, and we are training food service staff to prepare seasonal, plant forward entrees that are taste tested and approved by middle school students.

Support for farms in our region is crucial in building a more just food system. Our successful markets in Beacon and Newburgh ensure that farmers have a viable source of revenue selling their goods within the Mid-Hudson region while reaching economically diverse communities. We are developing support structures and networks for farmers to successfully sell to schools and other institutions. We are proud that we have many partners who help us in building sustainability and farmer viability in our region--our collaborative work with Green Teen teaches our youth hands-on farm-based skills, giving teens the tools they need to become future farmers and stewards of our lands.

The support of our community has been critical to our success. We are very grateful to everyone who has participated in our programs, all of the volunteers who distribute our produce to soup kitchens and food pantries, and to our many donors. We are honored to nourish, teach, and contribute to our community.

My best,



Sember Weinman
Interim Director

2019 STAFF

SEMBER WEINMAN

Interim Director, Co-Director, Education Director

Sember oversees educational programming, including Farm to School, our popular Preschool on the Farm series, adult workshops, and Farm Camp. As Director, she oversees grant-writing, communications, She built Common Ground's Farm to School programming from its inception, reaching almost 4,000 children in 2019. Prior to her work at the farm, she was the education coordinator at Lehman College Art Gallery. She is a certified K-12 art teacher, and taught middle school art in the Bronx. She holds an MFA in painting from Pratt Institute and a B.A. double major in environmental studies and studio art from Oberlin College.



RACHELLE LOUIS

Administrative Manager (from September 2019)

Rachelle joined Common Ground Farm as the Administrative Manager in the Fall of 2019 and is looking forward to helping Common Ground Farm continue to grow. Prior to her working at Common Ground, she was the Pro Bono/CLE Coordinator at Schulte Roth & Zabel in NYC. She has also worked part time as a consultant to nonprofit start ups, ran a Home Owners Association, volunteered with the Vassar Haiti Project while transitioning to life as a stay at home mom. She is excited to start this new chapter of supporting farming and food access in the Hudson Valley!



SARAH SIMON

Co-Director, Farm Director (through July 2019)

Sarah oversees Common Ground's vegetable production, land stewardship, farm staff, food justice programs and community partnerships. She started farming in Maine at an animal and vegetable CSA farm and was then drawn to Beacon, NY by the mission and values of Common Ground. Over her time here she has launched the Beacon Farmers' Market as a Common Ground enterprise, expanded the Greens for Greens food benefit matching program, and led our expansion to the City of Newburgh in 2017. Sarah holds a B.A. from Princeton University.

LEAH GARRARD

Farm Manager (from March 2019)

After spending her early 20s working for international human rights advocacy groups, Leah found farming as a career, when she volunteered on a coffee and macadamia nut farm in Hawaii. A whole new avenue of service opened up through a lifestyle dedicated to dirt, sun rain, and growing vegetables. She has traveled all over the world in the off-seasons, learning about people and agriculture because access to healthy, sustainably grown food is fundamental and necessary for all. The Hudson Valley has been Leah's home for the last 6 growing seasons, working on a variety of farms and gaining a whole range of experiences.



PALOMA WAKE

Farmers' Market Manager (through December 2019)

Paloma began as the Beacon Farmers' Market Manager in the fall of 2018. She previously ran the Hudson Valley Shakespeare Festival's community engagement programs, including a fully staged production of Rip Van Winkle with a 43 person cast of professional and amateur art makers. Paloma has a background in special events, producing for BAM, Signature Theatre, Jessica Lang Dance, and The Center at West Park, among others. She recently completed the Good Work Institute's Fellowship Program. She is excited to expand upon the Market's programming while continuing to support Hudson Valley farmers and bringing healthy, accessible food to Beacon every Sunday.



JENNIFER LOEB

Newburgh Farmers' Market Manager

Lori first got involved in the farming sector serving as an AmeriCorps member at a federally qualified health center in Westchester County, where she was a liaison for healthcare services and assisted customers with SNAP benefits at a local Farmer's Market. She also volunteered at a local preschool and community garden collaborative. Through these experiences, Lori has witnessed barriers towards good health such as a lack of education and access to healthy foods. Lori hopes to address health inequity and have an impact in the community by making the healthier choice the easier choice!



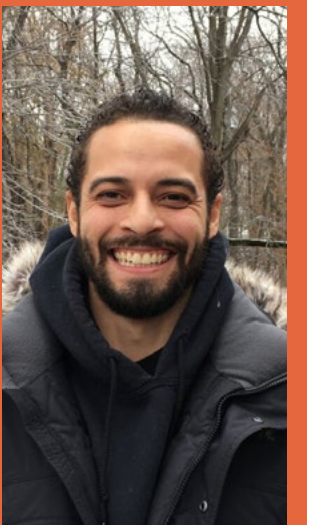
DIANA DIMURO

Administrative Manager (through August 2019)

Diana's love of the outdoors led her to become an AmeriCorps volunteer with American Conservation Experience, a conservation corps based in the west. She has recently returned to the Hudson Valley, where she worked for a fine gardening design and landscape firm, and later for the nonprofit Walkway Over the Hudson as office manager. Wishing to get back into nonprofit mission-driven work, Diana joined the team at Common Ground, working as Administrative Manager, educator, and on the farm crew.

WELCOME TO OUR NEW BEACON FARMERS' MARKET MANAGERS

Jade Silverstein joins us as the Beacon Farmers' Market Operations Manager and Tyler Epps will become the Beacon Farmers' Market Community Manager. Jade has spent years working as a farmer and farmers' market vendor and is excited to bring her passion for sustainable food systems and her love for farmers' markets to the Beacon Farmers' Market. Tyler has experience working at a holistic learning center, WWOOFing and studying methods for healthy living. He is a father of triplet boys, and is excited to pass on valuable lessons of diet, sustainability, and well being to his sons. Together, they will take on growing a robust community market-place that supports local farms while ensuring food access to all members of our community.



FARM CREW

Stacey Beiler
Brandon Booker
Kristopher Clark
Diana DiMuro
Jessica Shay

FARM CAMP INSTRUCTORS

Emily Ellison Sonya Joy Key
Jessica Jelliffe Sarah Olsen
Jenna Finger Jeanette Sayago
Shannon Kenney Jessica Shay

FARM CAMP COUNSELORS

Jessica Jelliffe
Michaela Kulpinski
Serena Markinson
Kate Purcell
Caty Vilato

THANK YOU SARAH!

Sarah began her time at Common Ground as part of the farm crew in 2015, but very quickly began an expansive trajectory, taking on leadership at the Beacon Farmers' Market and building and growing Common Ground's mobile markets and food access work in the City of Newburgh. Sarah became the Farm Director in 2017, and quickly began to find methods for increasing farm capacity: she developed strategies for capital improvements in the fields, she grew new outlets for sales and for donation, and she built a strong culture among the farm crew to stay positive and focused in all weather. In late 2017, Sarah and Sember developed a proposal for a Co-Directorship, to take on leadership that was critically needed. The board approved this plan, and Common Ground entered its most stable years in its history. As Co-Director, Sarah was a visionary for the organization, developing and implementing strategic plans for growing a more just local food system, convening meetings across organizational board and staff and across organizations, and taking the lead on a variety of initiatives that have led to organizational strength and impact in our community.

Sarah's leadership, thoughtfulness, grace, and courage has had a profound impact on Common Ground and the communities that we serve. Thank you Sarah for your leadership and service! We wish you the best in the next chapter of your journey!



THANK YOU DIANA!

Diana served as the Administrative Manager from 2018, and in that time became a leader in our organization by supporting all staff and learning all aspects of our work. Diana worked on the farm crew, lead educational programs, supported Farm Camp, assisted in the success of events and campaigns, and brought energy and positivity to all aspects of her work!

Diana's spirit and enthusiasm for Common Ground's mission and work was evident every day! Thank you Diana for all of the hard work, flexibility, and care that you brought to your position. We will miss you!

2019 BOARD OF DIRECTORS

2019 BOARD OF DIRECTORS

Megan Wiley, Board President
Allsport Health and Fitness

Kundi Glasson
Gatehouse Realty

Justin Conway
Crystal Run Healthcare

Alfred Esposito
Adam's Fairacre Farms

John Kelly
Beacon Digital Cinema and JK Productions

Erin Murphy
Reservoir, Business Owner

Jamie Pabst
SpiriTune, Inc., Miss Behavior Music

Elaine Smiley
Hospital Service Specialist at LiveOnNY

Benjamin Giardullo, Board President Emeritus

It is a true honor to be a part of an organization that gives directly back to the community in powerful ways. I am inspired by the tireless effort and diligent work Common Ground does to fully support equal food access for all, as well as providing agricultural education so that future generations are able to make informed choices on where their food comes from.

-Megan Wiley, 2019 Common Ground Farm Board President



2019 FARM ACCOMPLISHMENTS

Each year, we aim to strengthen our local food system by growing fresh and healthy vegetables for our community at the farm. Through partnerships with local food donation programs, farmers' markets, the public school system, and our U-Pick CSA we distribute tens of thousands of pounds of fresh produce into our neighbors' hands. On our 6.5 acre farm, we are continuously trying to improve systems and infrastructure so that we can more efficiently and effectively grow fresh produce which can be distributed through different outlets in our community, creating better accessibility to healthy food options. This year was no different - we invested in a new tractor and a new deer-proof perimeter fence which made the 2019 farming season incredibly successful. With an incredibly dedicated farm crew, fairly uneventful growing conditions and these critical and very helpful tools in place, we saw our fields full of abundance.

In 2019, Common Ground:

- Continued our robust donation program from 2018, providing weekly CGF grown produce donations to seven different food pantries and soup kitchens in the Beacon/Fishkill/Wappingers Falls/Newburgh area. We donated 8,895 pounds to these specific outlets from May through December.
- Distributed an additional 1,695 pounds of CGF grown produce through the Green Teen Mobile Market to food insecure populations in Beacon.
- Provided approximately 550 pounds of fresh CGF grown produce to children in Beacon City School District cafeterias through our pilot Farm to School produce procurement program.
- Hosted 60 families weekly on the farm during the summer to harvest a share of vegetables through our U-Pick CSA program.
- Increased produce sales through our vegetable stands at the Beacon Farmers' Market and Newburgh Farmers' Market by 27% from 2018. This revenue further creates financial stability for our farm operation and mission driven food access programs.



CAPITAL IMPROVEMENTS

In 2019, Common Ground made two major capital improvements to support farm production: We invested in a new Kubota M6060 63HP tractor, with a three point hitch, a power take off and a front end loader. This tractor does everything we could dream--it starts every time (which is a big improvement!), it pulls and powers all of our implements easily, and has offered us the ability for the first time to lay drip tape and plastic mechanically onto our beds in the fields. After the plastic is put down, the farm crew manually



pokes holes into the plastic and transplants the seedlings into the soil. The plastic acts as a mulch --keeping our countless weeds at bay, warming the soil in April and May for better and earlier plant growth, and holding in moisture, which is especially helpful for our sandy soil during summers of drought.

Common Ground also laid permanent deer fencing around the perimeter of our fields, saving us many hours of repair work each year and saving us thousands of dollars in crop damage losses!

FARM STAFF HIGHLIGHT: STACY BEILER

What drew you to the organization?

I initially came to Common Ground Farm and farming in general because I saw a job posting in a local cafe and I thought, "Hm, that might be fun." But once I learned about Common Ground's dedication to food justice and the learning opportunities that came with the job, I was convinced I should give it a try.

What is your favorite part about working at Common Ground?
Always learning new things, feeling more in touch with the earth and myself, and free veggies of course!

What is your favorite vegetable to grow and eat?

To grow: Probably kale.

To eat: Hmm I like them all. But at the farm I discovered salad turnips, which I was surprised to find are so delicious!

What was your favorite farm "moment" or task on the farm?

One of my favorite parts of working on the farm was working with the Green Teens. They were funny, sweet, challenging, and everything in between, and definitely made life interesting whenever they came around!



2019 FARM PROGRAMS

PLANT SALE

Every year Common Ground grows hundreds of seedlings for our annual Plant Sale. This year, the community came out and supported our annual plant sale like no year before! We grew almost 2,000 seedlings, from basil to tomatoes to flowers, and generated over \$5,000 in revenue. This historic outcome was greatly due in part to our local green-thumb supporters who pre-ordered almost \$2,000 in plants and everyone who showed up on the beautiful, sunny day of the event on Main Street in Beacon.



OPENING OF THE FIELDS

On April 13th, friends of the farm joined us for a contemplative walk through the early spring fields. Both hope and uncertainty shape the beginning of the growing season on the farm. The traces of last year's labor have faded, winter has claimed what was once green and lush, and the farm is just beginning to wake up again. This was an opportunity to appreciate the potential abundance of the fields as well to reflect upon the changes and uncertainty inherent in nature.

Sarah Simon shared all of the hard work that goes on behind the scenes at this time of year, from replacing the deer fence, to seeding in the greenhouse, to preparing the soil for planting. We were also honored to be joined by the leaders and congregations of the religious organizations that operate our partner food pantries and soup kitchens. This walk was an opportunity to deepen the partnership between the farm and our food access partners, and to focus on the connection between our food justice mission and the ethical commitments that engage many religious communities with the issue of poverty. We also learned from the faith leaders about the teachings and blessings that guide their perspective on food, farming and nature.



U-PICK

For 12 weeks this summer, we welcomed 60 families onto our fields to participate in harvesting their own produce as part of our U-Pick program. Participants were able to pick the very freshest peas, lettuce, carrots, squash, peppers, tomatoes, tomatillos, ground cherries, herbs, flowers, and more! U-Pick is a time for people to get outside, enjoy the farm, and connect with food and each other. This year we were able to accept SNAP/EBT and payment plans, in addition to welcoming drop in Farm Camp families!



**COMMON
GROUND**
THANKSGIVING SHARE
COMMONGROUND.FARM.ORG

THANKSGIVING SHARES

This year Common Ground wrapped up its season by offering Thanksgiving Shares to families that included potatoes, sweet potatoes, squash, carrots, greens, apples, herbs, and local bread.

In addition, Common Ground provided Thanksgiving shares to all 30 children participating in our backpack program, with volunteer help and gift cards from the South Avenue PTA, the JV Forrestal PTSO, the administrative staff and social workers from each of these schools, and with generous support from the United Way and Poughkeepsie Journal Holiday Helping Hands grant.

2019 EDUCATION PROGRAMS

Common Ground offers hands-on, farm-based education programs for adults and children of all ages, and provides financial support to ensure access to people of all incomes. This year we were able to reach 4500 people in our community through our education programs that include Farm Camp, Farm to School programming, Group Visits to the farm, Preschool on the Farm, Adult Workshops, and Birthday Parties.



FARM CAMP

At Farm Camp, kids learn through collaboration, exploration, imagination, discovery, and creation. Children engage directly with farmland and the natural world and make their own culinary, scientific, and artistic creations with their own hands. Campers spend time in the garden, at the pond, in the field, in the barn, and along our nature trails. Kids develop new skills, make new friends, and grow an appreciation for the beauty and complexity of the natural environment within which we live.

In 2019, we offered seven weeks of programming with a different food, nature, or farming theme each week, in addition to our eight week program for Counselors in Training. Each year demand for our programs intensifies, and we were full for our sessions for 3-4 year olds and 5-6 year olds within hours of opening registration.



In 2019, Farm Camp welcomed a variety of guest instructors, including Stephen Soltish and Kaetlyn Stamper, Stony Kill Foundation interns, who taught several sessions on beekeeping and animal husbandry, and Bill Robinson, who led a very exciting presentation on birds of prey!

Thanks to the continued support of the Dyson Foundation, we were able to offer 18 full scholarship slots plus two full Counselor in Training slots to 16 low-income children, plus 17 sliding scale scholarships in 2019.



2019 EDUCATION PROGRAMS

ADULT WORKSHOPS

Common Ground collaborated with community partner NY Textile Lab to offer Sustainable Textiles, a series of workshops that supported community engagement in our local textile system. Participants learned how to make dye from flowers harvested from the farm, mend their old clothes, and used naturally dyed wool to make their own holiday ornaments. Scholarships were offered for each workshop to ensure that anyone in our community could participate, regardless of income. This project was made possible with funds from the Decentralization Program, a regrant program of the New York State Council on the Arts with the support of Governor Andrew Cuomo and the New York State Legislature and administered by Arts Mid-Hudson.



PRESCHOOL ON THE FARM

Preschool on the Farm is an opportunity for young children ages two to four years old and their adult caregivers to explore nature, food, and farming together through our one-hour workshops designed just for them. Preschool on the farm ran as a 16 session series in the spring and fall, with 10am and 11am sessions to accommodate demand. We also instituted a scholarship program, so that everyone with young children living in our community can participate, regardless of income.

COMMON GROUND HOMESCHOOL

In 2019 Common Ground piloted a farm project-based homeschool series, open to children ages 6 and up. Each week participants spent two hours exploring a different farm-based theme, where they learned scientific concepts, art techniques, movement, and cooking. That engaged the topic through different lenses, including science, movement, cooking, and art.



FARM TO SCHOOL

Over the past seven years, Common Ground has worked in collaboration with the Beacon City School District to provide educational programming to elementary students that include farm visits, Chef in the Classroom, Farmer in the Classroom, and multi-session workshop series. In 2019, Common Ground developed a comprehensive Farm to School program, which built in a multi-session workshop series for preschool students, a global cuisine Chef in the Classroom program to complement the global studies built into their curriculum, a fourth grade bee workshop series, offered in partnership with Cornell Cooperative Extension Green Teen program, and a 5th grade collaborative mural workshop series.

In 2019, Common Ground also began its first year of a two year USDA grant, designed to increase New York State procurement, develop new plant-forward entree recipes, build outreach through web-based information and student-led initiatives, and to launch Farm to School programming at Rombout Middle School. This initiative includes student tastings and professional development programming for food service staff and teachers.

In 2019, 550 heads of lettuce, in addition to cucumbers, tomatoes, peppers, and kale were eaten by children in school cafeterias through our Farm to School produce procurement program, including vegetables for the monthly taste tests. In 2017 Common Ground became a client of the Pace University Law Food and Beverage Clinic, and in 2018 we worked together to create a Farm to School Legal Toolkit, a workbook for farmers interested in selling their crops to local schools. This project was finalized in 2019.



Common Ground is committed to supporting food engagement among students by increasing food access for everyone in the school-based community. Common Ground partners with Hudson Valley Seed to offer Crop Shop, an after-school farm stand, where families can buy fresh produce while students learn how to operate a market. Common Ground led a collaborative effort together with the administrative staff at South Avenue and JV Forrestal Elementary, the schools' PTA and PTSO, Fishkill Farms, MX Morningstar Farm, and Dagele Farm, to provide a Thanksgiving distribution of fresh produce and a grocery store gift card to 25 food-insecure students. This effort was supported with a Holiday Helping Hands Grant from United Way of the Dutchess-Orange Region and the Poughkeepsie Journal. Common Ground also took on management of the school backpack program, ensuring that all students in the Beacon City School District have access to food at school and at home.

2019 MARKETS

BEACON FARMERS' MARKET

Under the stewardship of Common Ground Farm, the Beacon Farms' Market's mission is The Beacon Farmers' Market mission is to feed and engage the Beacon Community, support local farms and businesses, and create a more just food system.



The Beacon Farmers' Market supported 20 different farms throughout the year plus more than 20 guest vendors including seven vendor businesses who live and work within the City of Beacon.

SNAP usage at the Beacon Farmers' Market increased 130% from 2018 and Greens4Greens participation grew by 175% in Beacon and 248% across our markets (Beacon, Newburgh, and CommonGreens mobile market). We redeemed \$4520 in Greens4Greens coupons at the Beacon Farmers' Market in 2019.

The Indoor Winter Market celebrated its fourth year with our partners at the Beacon VFW Hall, which allowed us to serve the Beacon community year round.

**Special Thanks 2019
Beacon Farmers' Market
Committee Members:**
Alex Berke, Tyler Epps, Amber Grant, Meredith Hairston, Jessica Jelliffe, Sergei Krasikov, Zoe Markwalter, Beth Poague, Mark Price, Kara Sharpe, Jesse Stacken, Joe Waring, and Gregg Zuman



NEWBURGH FARMERS' MARKET

In 2019 Common Ground Farm grew its food access initiatives in Newburgh from a farm stand at Downing park in 2018 to a full Farmers' Market, located at Safe Harbors Green, right on the corners of Broadway and Liberty Streets. The Newburgh Farmers' Market was in operation for 15 Saturdays, from July 13th through October 19th, and provided space for 11 vendors throughout the season, with five to seven vendors at each market. In addition to three to four weekly produce farms, vendors also offered local eggs, maple syrup, lamb products, spirits, herbal products, plants, and prepared food.

The market offered educational programming throughout the season, including cooking demonstrations, pottery demonstrations, and local music.

The Newburgh Farmers' Market participated in the Greens4Greens program, and redeemed \$2,230 in Greens4Greens coupons, matching customers' WIC, FMNP, and SNAP benefits. The Newburgh Farmers' Market also piloted an after market donation program, which enable us to donate 1,928 pounds of locally grown produce to Newburgh soup kitchens, in collaboration with Newburgh Urban Farm and Food.

NEWBURGH MOBILE MARKET

In addition to the standing Saturday market, Common Ground hosted a mobile market at a new location, in partnership with Crystal Run Healthcare in Newburgh. For three Tuesdays in August, we set up a mobile market in the parking lot and sold our fresh vegetables to some of the thousands of patients and employees who visit their Route 300 center daily. We are hoping to expand this partnership next year, engaging medical staff in providing "prescriptions" for fresh vegetables and fruits.



2019 EVENTS

SOUP4GREENS

Greens4Greens is a food benefit incentive program that began at the Beacon Farmers' Market in 2016, matching eligible NYS funded food benefits dollar for dollar with \$4 Greens4Greens checks to double participant purchasing power at the markets, making the farmers' market more accessible to a wider base of consumers while reimbursing our farm vendors. The program has been completely community funded through contributions made by local businesses, as well as the 'Soup4Greens' fundraiser event. Increased community funding in 2017 allowed for the program to run throughout the winter market season as well as the summer, and in 2018, we were able to extend the program to the Downing Park Farm Stand in Newburgh. In 2019, we raised nearly \$2,500 at our annual Soup4Greens event! This funding directly supported food access initiatives at the Beacon, Newburgh, and Common Greens markets.



Soup4Greens Special Thanks to:

Our Co-Hosts: Green Teen Beacon, Compass Arts, and Virginia Piazza Pottery

Community Cooking Day Supporters: Gretchen, Ben, and the First Presbyterian Church, Beth Poague, Brian PJ Cronin, BTweens and Paloma Wake, Eggberts Free Range Farm, Jessica Jelliffe, Nerds with Knives, Shane Prosser Rhodes.

Soup Supporters: Beacon Pantry, Beacon Natural Market, Ella's Bellas, Fishkill Farms, Fresh Company, Homespun Foods, Hudson Valley Seafood, Inner Flame, Marbled Meat Shop, Max's on Main, Momo Valley Dumplings, Once Upon a Time Bakes, Quinn's Rest N' Rant, Yankee Clipper Diner.

Bread Supporters: All you Knead Bakery, Bread Alone Bakery

Pottery Supporters: Beth Bolgla, Chris Sanders, Garrison Art Center Pottery Studio, Jessica Dubin, Liberty Valence, Nancy Bauch, The Newburgh Pottery, Pat Tetlow, Peekskill Clay Studios, Virginia Piazza.

Coffee4Greens: Generously provided by Trax Coffee Roasters throughout the indoor market season!

Additional Support: Containers provided by Key Food Marketplace and Quinn's Rest N' Rant, Music by market troubadour Ian Moore. The Community Art Project hosted by Compass Arts was on display at Story Screen theater on Main Street!

GET PICKED

Common Ground held a fun mixer at Hudson Valley Brewery, that included a raffle to "get picked" for a seasonal U-Pick share, a photo booth, and live music by the Wakies! This event helped raise \$2,121 to support capital farm equipment and was a great way to start out our growing season!

Special Thanks to Hudson Valley Brewery for hosting the event, The Wakies for an awesome live performance, and Ambria Michelle for capturing many special moments!



COMMON GROUND FARM

GET PICKED

MARCH 1ST, 8 - 11PM

HUDSON VALLEY MEET & MIXER | TICKETS \$25

SINGLES, COUPLES & QUESTION MARKS
Come gather for a fun night of music & drinks for Common Ground Farm! In 2019, the farm is investing in a new tractor and deer fence to optimize our growing season and educational programs for many years to come.

INCLUDES:

- 1 Drink Ticket Hudson Valley Brewery 7 Main St, Beacon, NY 12508
- 1 Ticket To Win A Common Ground U-Pick Share Drawing 10:15pm
- Live Performance By The Wakies 8:30-10pm With Special Guests

TICKETS:
store.commongroundfarm.org | events@commongroundfarm.org
@commongroundfarm #getpickedcommonground



EVENTS: SUN AND EARTH FESTIVAL

We had a fantastic time at our second annual Sun & Earth Farm & Food Festival held on August 3rd, at Stony Kill Farm. The Sun & Earth Festival welcomed guests to explore Common Ground Farm, eat delicious local food, enjoy music performances, and engage in food and farm activities. The event highlighted multiple activities including: yoga, music, pottery demos, and cooking demonstrations with farm fresh produce.

Food and drink vendors included: Las Tres Americas taco truck, Marbled Meat Shop hot dogs, Barb's Butchery with pulled pork and chicken sandwiches, Samosa Shack, Drink More Good and Zora Dora popsicles. The Common Ground Farm/Stony Kill 4-H Club sold snow cones to raise funds for their educational farming program!



COMMON GROUND FARM

Welcome to the Sun & Earth | Farm & Food Festival

SCHEDULE OF ACTIVITIES:
 3-6: Stony Kill Open Barn
 3-7:30: Food Vendors
 3-7: Newburgh Pottery Clay Wheel
 3-7: Beacon of Light Wellness
 3-4:30: Cooking Demo with Chef Key
 3-4: Tony DePaolo Live Music
 4-5: Yoga in the Field with Julian
 5-6: Jesse Stacken Live Music
 5-7: Cooking Demo with Chef Leiss
 6-7: Yoga in the Field with Kyla
 6:30-7:30: Campfire Sing Along with Compass Arts
 7-8: Dance Party with Jamie Pabst!

SPECIAL THANKS TO OUR MUSIC SPONSOR:
Hudson Valley
 FEDERAL CREDIT UNION

AND OUR ACTIVITY SPONSORS:
ALL SPORT VASSAR BROTHERS MEDICAL CENTER STOP&SHOP.
 HEALTHQUEST

DONATIONS TO COMMON GROUND SUPPORT OUR CRITICAL WORK IN FOOD ACCESS & EDUCATION VISIT COMMONGROUND.FARM.ORG TO LEARN MORE



COMMON GROUND FARM



2019 FINANCIALS

OPERATING BUDGET

January - December 2019

INCOME

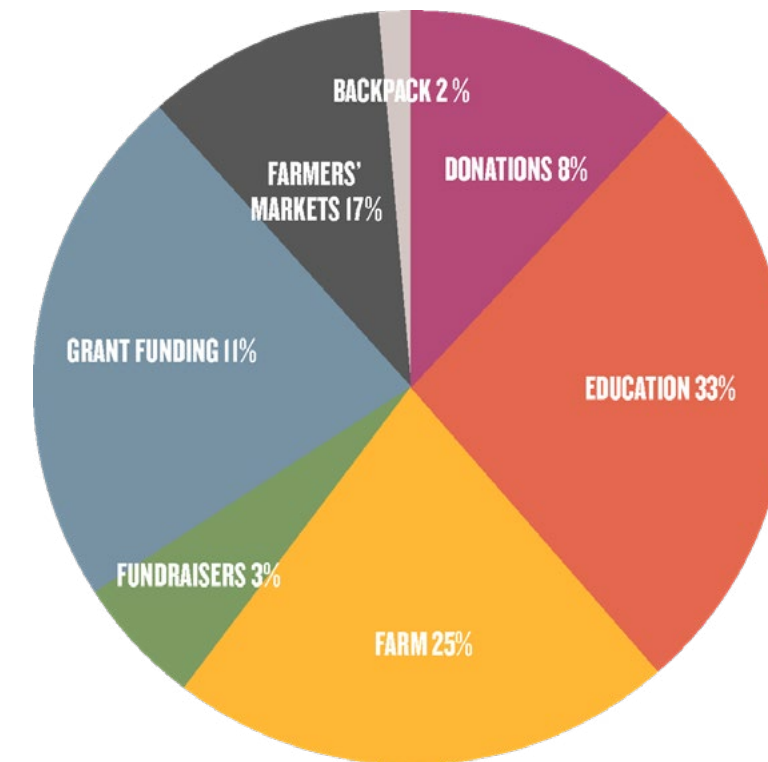
Donations (Corporate and Individual)	\$28,734
Education	\$122,531
Farm	\$90,789
Farmers' Markets	\$63,609
Backpack Program	\$7,100
Fundraisers	\$11,471
Grant Funding	\$39,774
One Nature Rental Income	\$2,100
Interest	\$345
TOTAL INCOME	\$366,453

EXPENSES

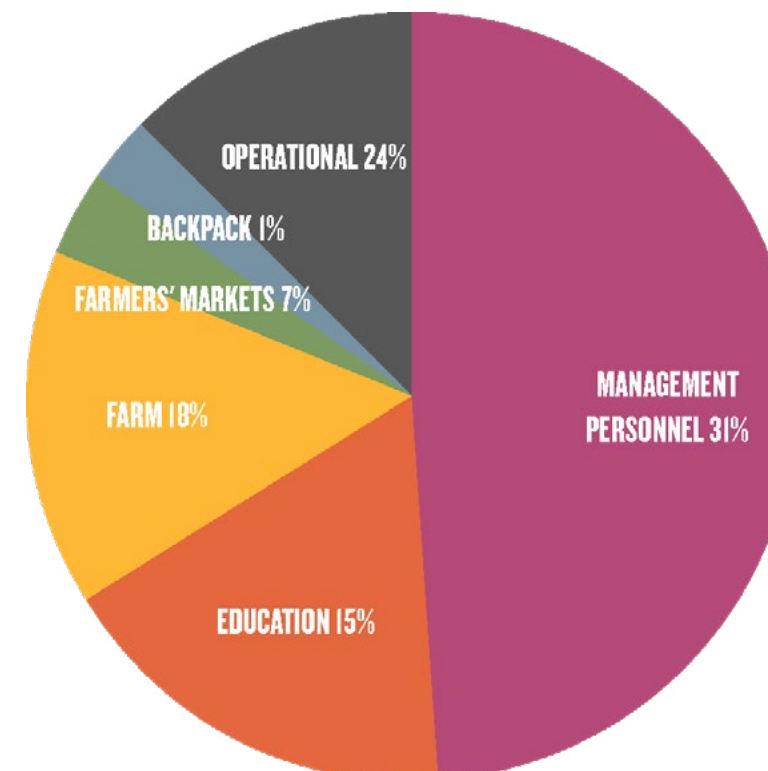
Management Personnel	\$113,871
Education	\$53,101
Farm	\$67,178
Farmers' Markets	\$24,713
Backpack Program	\$1,774
Fundraising	\$1,440
Operational	\$90,809
Grant Expenses	\$13,132
TOTAL EXPENSES	\$366,018

For more information visit: www.commongroundfarm.org

INCOME



EXPENSES



OUR DONORS & PARTNERS

FOUNDATIONS & GRANTS

Ann and Abe Efron Donor Advised Fund of the Community Foundations of the Hudson Valley

Arts Mid-Hudson

Clif Bar Family Foundation

Community Grants Fund of Dutchess County of the Community Foundations of the Hudson Valley

Doris Duke Charitable Foundation

Dyson Foundation

Farm Fresh Food Grant of the Community Foundations of the Hudson Valley

Green Mountain Energy Sun Club

Hannaford Charitable Foundation

Hudson Valley Federal Credit Union

Laura Goldman Chasin Family Fund

Natural Resources Conservation Service of USDA

Ralph E. Ogden Foundation

Stewart's Shops

TD Charitable Foundation - TD Bank

Teaching the Hudson Valley, a project of the National Park Service

United Way of the Dutchess-Orange Region

CORPORATE DONORS

All Sport Health & Fitness
Beacon Natural Market
Beacon Pantry
beBhakti Yoga Center
Berg + Moss Architects
Calvary Presbyterian Church
Community Health Center Beacon
Costco Wholesale Executive Match
Drink More Good
Forrestal Heights Beacon
Glynwood Center
Green Mountain Energy
Health Quest
Healthy Orange Market
Herb Redl Properties
Hudson Todd, LLC
Hudson Valley Brewery
IBM Executive Match
King + Curated | The Curated NY
Kitchen Sink Restaurant
Network for Good
NYS Department of Environmental Conservation
SallyeAnder
Samosa Shack
Stock Up
The Roundhouse at Beacon Falls
Tuthilltown Spirits

\$1000+

Justin & Jessica Conway
Alexander Reese & Alison Spear
Carol Marquand & Stan Freilich
Melanie Sherony & Albert Young
Jacquelyn Bucelot-Mills
Chris & Priscille Voekler
Jinny St Goar & Joe Donovan
Susan Brune & Carl Loewenson

\$500-\$999

Joel Brandstrom
Laura Wilson & Mark Menting
Ben Giardullo & Kundi Glasson
Alan & Diana Simon
Brian Delikat, Independence Home Mortgage Corporation
Adam & Erin Murphy Doan
Edward Benavente
Gloria and Bob Fox
Heidi and Richard Rieger
Mr. and Mrs. William E. Conway
Susan Davidson

\$250-\$499

Claire Tiple & Stephen Spaccarelli
Lauren Dellolio & James Walton-Fuentes
Alisha Albinder
Arabella Stickels & Matthew Perks
Hana Ramat
Jamie Pabst & Tom Lee
Kerry Hannifan
Paul Ellis Consulting
Anne E. Impellizzeri
Megan & Ryan Wiley
Linda Cantwell
Beacon Natural Market
Josh Rutner
Juanita & Earl Weinman
Liz Neumark
Sheila Prentice Rauch
Pamela Koeber-Diebboll

\$100-\$249

Rosangela Oliveira
Anne Conway Juster & Joseph Juster
Anne Juster
Bard College
Dr. Adam McKible
Elizabeth Lindy
Eric Baxter, RL Baxter Building Corp
Eric Santaniello
Fjord Vineyards
Galen Wilson & Casey Farmer
Janet Crawshaw
Lars & Marit Kulleseid
Martin Fowler
Meredith & Paul Laubin
Paul Feeney
Renee Harris
Tyler Dennis, Alewife Farm
Jodie Staton
Erin Murphy
Karen Pagano
Danielle Yeaple
William Irwin
Elizabeth Flynn
Charles Ramat
Jennifer Keller
Michael Sperling
Obercreek Brewing Company
Jessica & Jerry Sherman
Aaron Seliquini
Alan & Rosemary Thomas
Beacon Boys, Inc.
Belle & Blake T. Newton, III
Blair Patterson

Catherine Cottitta
David Schwartz
Elke & Neal Marsh
Hudson Beach Glass
Jaimee DiMarco
Janet Cross
Laura & Larry Monin
Lauren Adelman
Linsey Gatto
Lisa Brett-Chapin & Greg Chapin
Michael Lashutka
Neal & Elke Marsh
Nicole Santomero
Patricia & Anthony Lassiter
Shari DiMarco
St. Andrew's Church
Whit Lake
Yvonne & Richard Thurston

\$1-\$99

Dean Micheli
Marissa Kacqunski
Anne Carbone
Dennis Edson
Jennifer & Stephen Clair
Keith Paulsen
Marie Edwards
Helanna Bratman
Matt Peter Clifton
Robert & Barbara Koffsky
Amelie Vigeant & Evan Merkhofer
Diane Kucharczyk
Ellen Grogan
Gregg & Helen Zuman
Jilly Reynolds
Linda Kimmel
Miryan Kenet
Alison Spodek
Anna West
Beacon Arts Community Association, Inc.
Carl Campbell
Christian Stadler
Dave & Carolyn Llewellyn
Elizabeth Robinson
Emily Sylvester
Gregory & Florence Joan Freeman
Hops Hollow Farm
Insun Kim
Jackie O'Brien
Laura Haupt
Laura Kaufman
Lawrence & Marla Martin
Lily Piyathaisere
Margaret & Robert Ianelli
Mary Ellen Czesak
Nancy Goodman
Nita Sutton & Neil Alexander
Fosman
Ramachandra Divakaruni & Abby Gleason
Redemptoristine Nuns of NY
Sarah Beinstein
Sarah Salem
Sr. Lydia Lojo Cruz
Erin & John Giunta
Sarah Dimarco
Heather Vigeant
Amelia Corona
Lois & James Johnson
Nadine Revheim
Linda Daubert
Prudence Posner
Martin Courtney
Jennifer McCreery

Andrea Moreau
Anne Vitiello
Caroline Sherony
Danielle Levoit
David Sampliner
Deanna Arginsky & Michael Morenoff
Jean Huang
Jean-Marc Superville Sovak
Jeanette Sayago
Jennifer MacQueen
Jeremy Brettholtz
Katy Bell Behney & Buddy Behney
Kimberly James
Leeann Fonteneou Soto
Lori Merhige
Margaret Favretti
Margaret Yonco-Haines
Michael Schiffer
Paloma Wake
Sarah From
Stephanie Sherony
Steven Kidder
Amanda Futch
Beth Mostransky
Denise Eve
Erin Stewart
Eve Morgenstern
Jane Hammer
Jason Craig
Jean Brennan
Jinny & Robert Goff
Lisa Marie Martinez
Lynda McPartlan
Marieken Cochius
Rebekah Azzarelli
Sara Sylvester
Sarah & Brian Mencher
Stacey Lynch Adnams
Toni Hacker
Virginia Piazza
Isha Weerasinghe
Laura Cypress
Patricia Murphy
Uriel Lotero
Alexa Beckham
Benjamin Cox
Erik Brown
Ethan Timm
Penny Harrison
Sarah MacDougall
Elizabeth Sweeney
Vitalah Gayle Simon
Sasha Stim-Fogel
Air Nonken Rhodes
Natalie Russak
Sam Adels
Faye Leone

COMMUNITY PARTNERS & SUPPORTERS

Accuprint Pack N' Ship
All You Knead Bakery
Ambria Michelle
American Legion/VFW
BCSD Wellness Committe
Beacon City School District
Beacon Community Kitchen
Beacon Music Factory
Beacon Nutrition Advisory Committee of Dutchess County
Beacon of Light Wellness Center
Beacon Pantry
Beacon Pilates
Beacon Recreation Department

Beetle and Fred
Binnacle Books
Blue Sky Balloons
Caffe Macchiato
Caprice Rouge
Chef Nicholas Leiss
Chef Sandy McKelvey
Chef Sonya Joy Key
City of Beacon
City of Newburgh
Colorant
Common Greens Mobile
Farmers' Market
Cornell Cooperative Extension of Dutchess County
Darkside Records
Dennings Point Distillery
Dia: Beacon
Diana Mae Flowers
Dolly's Restaurant
Downing Park Planning Committee
Dutchess Outreach
Ella's Bellas
First Presbyterian Wappingers
Food Pantry
Fishkill Farms
Fishkill Food Pantry
Fresh Company
Gate House Realty
Gleaning the Hudson Valley
Green Teen Beacon Community Gardening Program
Grey Printing
Highland Current
Homespun Foods
Hudson Hills Montessori
Hudson Valley Harvest
Hudson Valley Seed
Judith Tulloch Band
Lamb's Hill
LNJ Tech
Meghan Spiro Photography
Miller Brothers
Mountain Tops Outfitters
National Young Farmers' Coalition
New Vision Church of Deliverance
Obercreek Farm
One Nature LLC
Poughkeepsie Journal
Quinn's Rest N' Rant
Rabe & Co.
Reservoir
Salvation Army Beacon
Samosa Shack
SBH3
Spinach World Multi Media
St. Andrew and St. Luke Episcopal Church of Beacon
Food Pantry
Station Built
Stock Up / Marbled Meat Shop
Stony Kill Foundation
Textile Lab
Thundercut
Trax Espresso Bar & Coffee
Roasters
Valley Table
Vegetalien
Virginia Piazza Pottery
Wee Play Project
Wholesome Wave
Zero to Go
Zion Episcopal Church Food Pantry





COMMONGROUNDFARM.ORG | 845-231-4424 | PO BOX 148 BEACON NY 12508